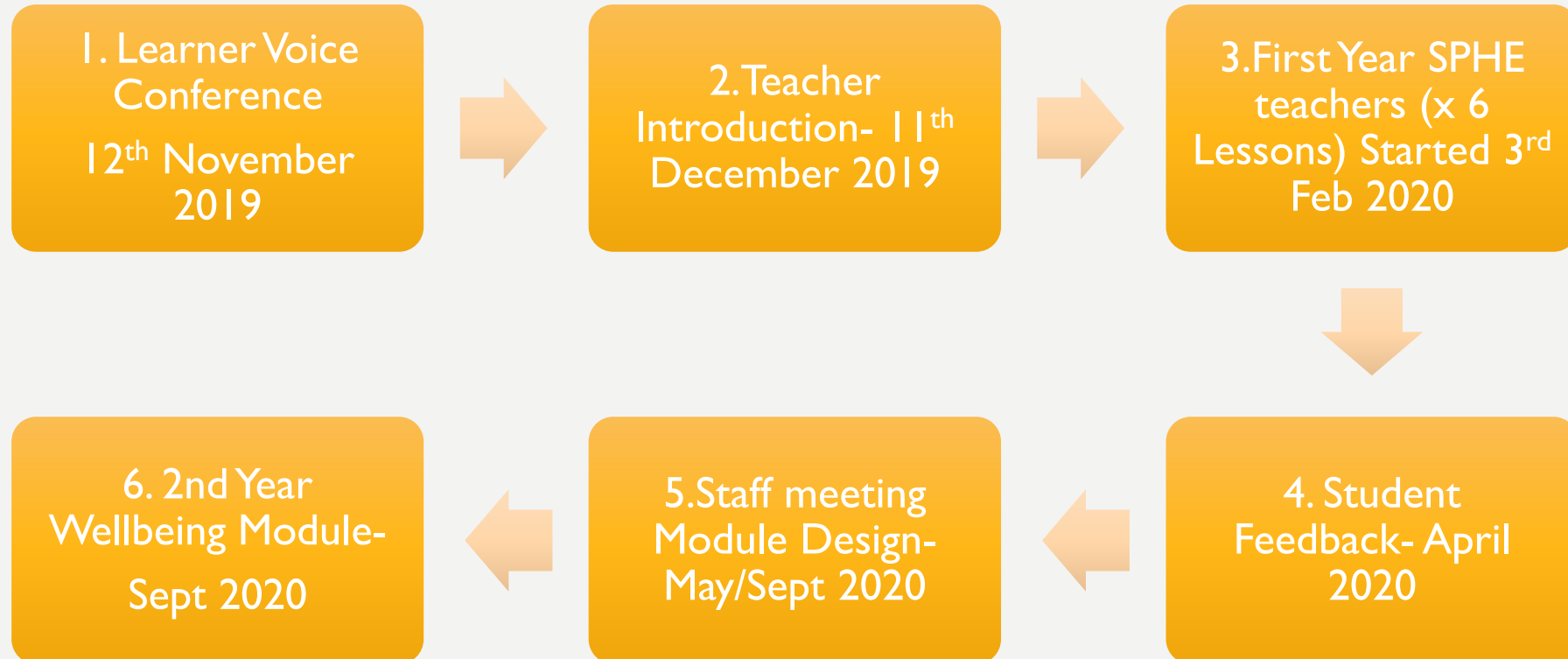


**NAAS  
COMMUNITY  
COLLEGE**

**LEARNER VOICE  
PROJECT**



# STEP BY STEP PROCESS



1. Introduce the concept of Learner Voice to teaching staff.



2. Work with SPHE teachers to use the NIC model to decide on topics for the module with current 1<sup>st</sup> years



3. Bring the topics to staff and facilitate the development of modules using Appendix I (4 Modules- 6 weeks each)



4. Implement 4 modules with 2<sup>nd</sup> years 2020/2021 on an 6 week rotation



5. Evaluate and review at the end of the year using feedback from students, teachers and parents

## Introduced the concept to Staff

- What is Learner Voice?
  - How a new Wellbeing Module will be developed
- Ideas for implementing learner voice in other areas of school life




Began implementation of 4 lessons in 1<sup>st</sup> year SPHE centered around the area of learner voice

# WHAT HAVE WE DONE SO FAR?

# 3. FIRST YEAR SPHE LESSONS

HAVING A VOICE IN SCHOOL  
DECISION MAKING AND WHY  
IT MATTERS

Lesson 1



Naas  
Community  
College

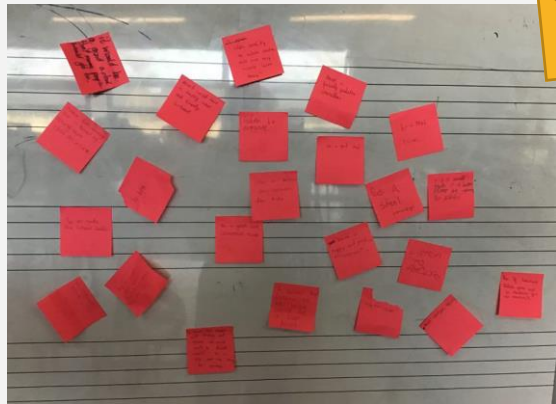
AUDIT OF STUDENT VOICE

What matters for young  
peoples Wellbeing today?

Young Peoples Wellbeing-  
What Matters?



Voice in the classroom (Teachers and students)<sup>1</sup>



WHAT THEMES ARE EMERGING FROM  
OUR FEEDBACK

Having a voice in school decision making and why it matters

Student Voice in Junior Cycle Wellbeing (Part 1)

Student Voice in Junior Cycle Wellbeing (Part 2)

Voice in the classroom- Student Review

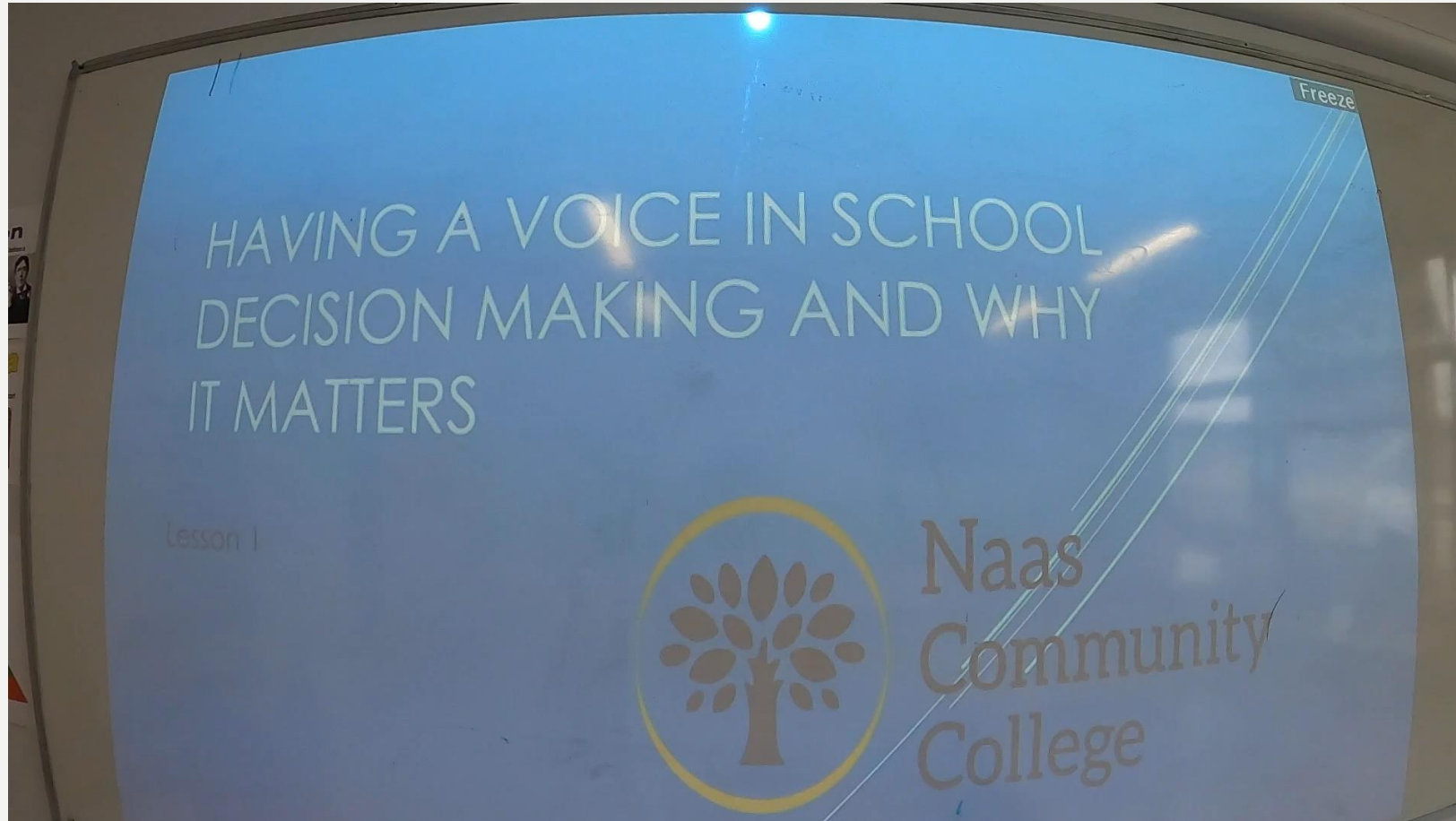
**LESSON TOPICS –**

[WWW.OURVOICESOURSCHOOLS.IE](http://WWW.OURVOICESOURSCHOOLS.IE)



Naas  
Community  
College

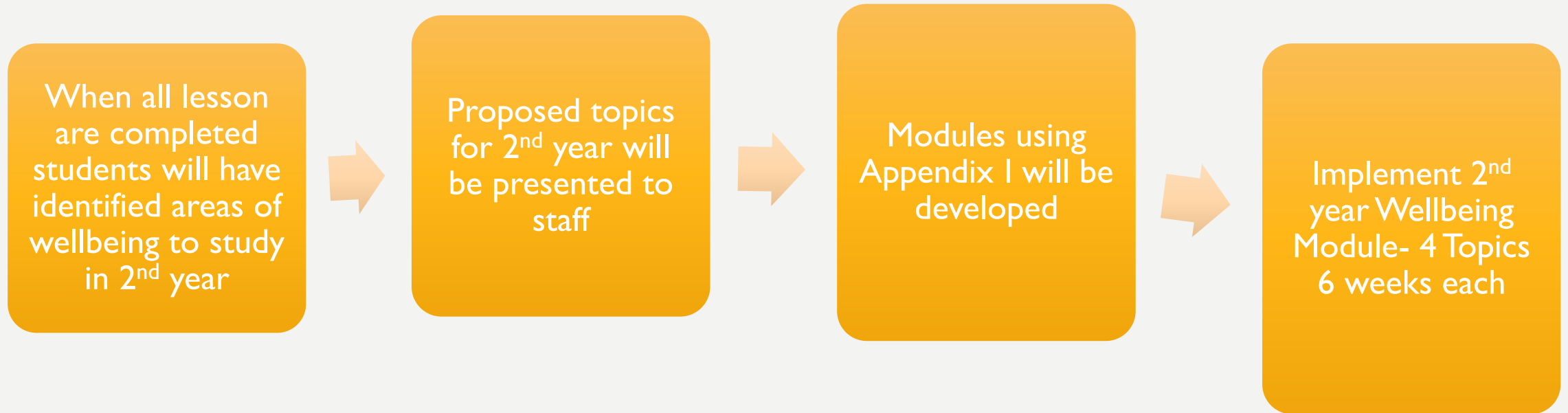
# VIDEO







# WHERE DO WE GO NOW?



1 <sup>st</sup> year SPHE	Wins/Success	Challenges
Teachers perspective	<p>Teachers liked the structure of the lessons</p> <p>Ranking ideas lead to interesting ideas being brought forward</p>	<p>Some students struggled to grasp the more abstract concepts e.g. resilience (1<sup>st</sup> years classes)</p> <p>Not giving concrete examples for answers</p>
Students Perspective	<p>Students are keen to have a voice in the school</p> <p>Students enjoy the activities in the lessons</p>	

**Suggestions for improvement:**  
 Have case studies or examples from other schools to help prompt students  
 Have an online form to help with collection of student feedback

SPHE-  
Drink Aware Trial  
Module

# OTHER AREAS WHERE LEARNER VOICE IS BEING IMPLEMENTED

2 <sup>nd</sup> Year Drink Aware Trial	Wins/Success	Challenges
Teachers perspective	Teachers liked the structure of the lessons  Very interactive	Some lessons required more time
Students Perspective	Liked that their views were being taken into consideration  Feeling of maturity and being respected in the school	Some students felt that the topics being discussed were not relevant to them and they would have preferred to be learning about a different topic

# OTHER AREAS WHERE LEARNER VOICE IS BEING IMPLEMENTED

## Student PE Uniform

- Surveyed students, staff and parents
- Presented at BOM and Parents association
- New PE uniform for next year

## Student Council

- Working on identifying areas for improvement within the school
- Fundraising ideas
- Training on the 31<sup>st</sup> of March



# QUESTIONS

